



LIVEPURE™

Compensation Plan

We deliver *whole* health.

How to earn with LivePURE

Live your best life.

The Compensation Plan offers Brand Partners the opportunity to deliver Whole Health through nutrient-rich products and skin care while earning income and other rewards.



Many Rewarding Ways to Earn

Get your feet wet by exploring the many ways to earn with LivePURE. Then when you're ready to dive in, focus on the Retail Commission, Sponsor Bonus, and Customer Retention Bonus, the most important ways to start earning an income with LivePURE.

01	Retail Commission	p.4
02	Sponsor Bonus	p.5
03	Customer Retention Bonus	p.6
04	Team Bonus	p.10
05	Generation Bonus	p.12
06	Leadership Bonus	p.14
07	LivePURE Bonus	p.15

The figures within this document are not guarantees or projections of your actual earnings, profits, or success. LivePURE makes no guarantee of financial success. Because of the countless variables that may affect a Brand Partner's ability to succeed in this field, it is impossible to accurately state what a Brand Partner may or may not expect to achieve. Consequently, LivePURE does not and will not make any guarantee of success of income, whether explicit or implied, and past Brand Partner testimonials as well as the information included in LivePURE's updated Income Disclosure Statement are only examples of what can be obtained as a Brand Partner with LivePURE. Past results do not represent any indication of future success or earnings.

For additional information, please visit <http://livepure.biz/IDS>.

Retail Commission

Sell products, get rewards. **Paid Weekly**

As an active Brand Partner, you may purchase our products at a wholesale discount of 25%. This provides you the opportunity to earn an immediate Retail Commission of 25% when you sell these products to customers¹ at the suggested retail price.

You may personally sell and deliver to your retail customers or they can shop on your personal website provided to you by LivePURE. Your 25% Retail Commission from LivePURE-managed retail customer sales will be included in your weekly LivePURE commission payment.

ENROLLING CUSTOMERS

Customers may enroll for free to become a Member by creating an account with LivePURE. Members enjoy a 25% discount on the suggested retail price.

Example Sale



¹Customers purchase directly from Brand Partners or through the company at the suggested retail price.

Sponsor Bonus

New orders, new earnings. **Paid Weekly**

As a Brand Partner, you have the opportunity to earn up to a \$400 USD bonus on every new Customer you personally sponsor, and as an active Brand Partner² you have the opportunity to earn up to a \$400 USD bonus on every new Brand Partner you personally sponsor. Your Sponsor Bonus is equal to 20% of the total Product Volume (PV) of the first order submitted by your new, personally sponsored Customers and Brand Partners.

²Active Brand Partner status is defined as having 100 PV or more (either personal product purchases or product sales to Preferred and Retail Customers or any combination thereof) every 28 days. Active Brand Partners are eligible to participate in Compensation Plan bonuses in addition to Retail Commissions and Sponsor Bonus on Customer orders. Product Volume (PV) is the amount of volume assigned to each product.

Customer Retention Bonus (CRB)

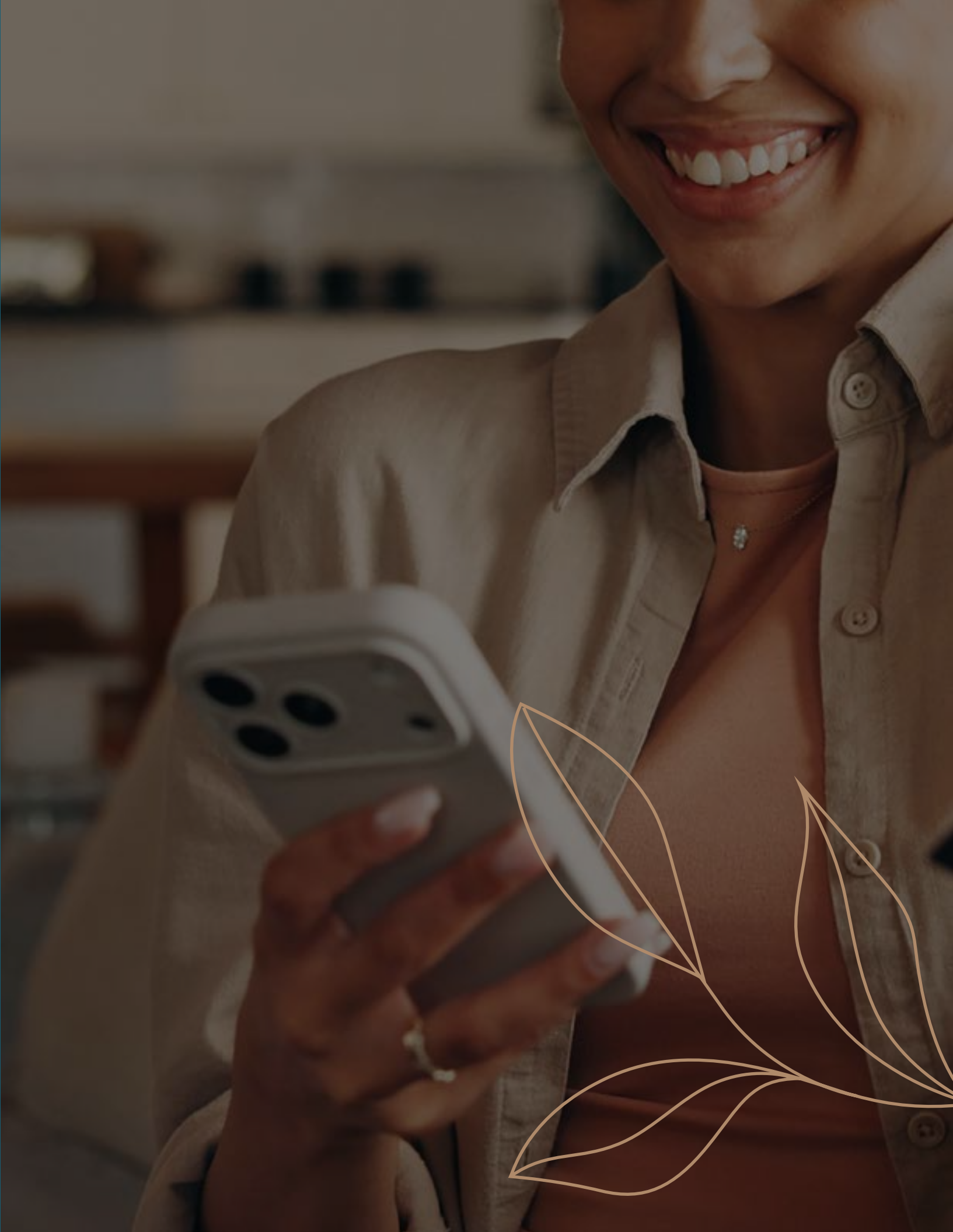
Loyal customers pay off. Paid Monthly

As an Active Brand Partner you have the opportunity to earn a monthly bonus* on the percentage of the total monthly Product Volume (PV)³ of ongoing orders submitted by your personally sponsored Customers (Retail and Preferred), excluding their first order.

STAR RANK	MONTHLY CUMULATIVE VOLUME FROM REORDERS (PV)	PERCENT PAY (PV) ⁵
1	1-100	5%
2	101-499	20%
3	500-999	30%
4	1000-1999	40%
5	2000+	50%

*Customer Retention Bonus is capped at \$100,000 USD per month.

³Product Volume (PV) is the amount of volume assigned to each product. Customer PV includes product sales to Preferred and Retail Customers an Brand Partner has personally sponsored.



Leadership Qualification

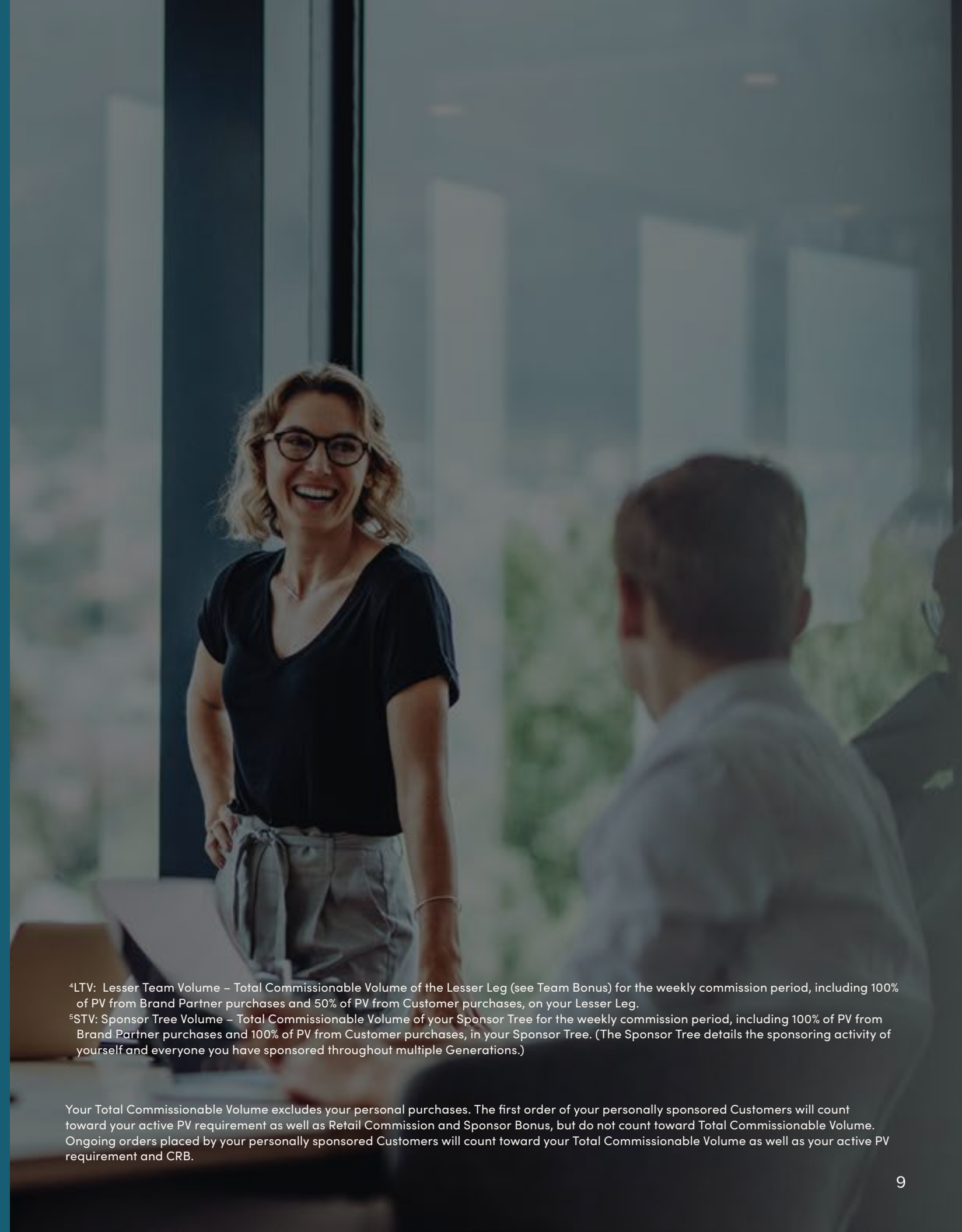
Grow your earning potential.

DIRECTOR RANKS	LTV ⁴	STV ⁵	MAX STV / LEG	MAX EARNING POTENTIAL / WK*
Bronze Director	500	–	–	\$1,000
Silver Director	1,500	2,000	1,500	\$1,000
Gold Director	3,000	4,000	3,000	\$1,500
Platinum Director	5,000	7,000	5,000	\$3,000
EXECUTIVE RANKS				
Sapphire Executive	7,500	10,500	7,000	\$4,000
Ruby Executive	10,000	15,000	10,000	\$6,000
Emerald Executive	15,000	20,000	13,000	\$8,000
DIAMOND RANKS				
Diamond	20,000	35,000	15,000	\$12,500
Blue Diamond	30,000	50,000	20,000	\$25,000
BOARDROOM RANKS				
Presidential Black Diamond	30,000	75,000	15,000 / 22,500 / 37,500	UNLIMITED
Chairman Black Diamond	30,000	150,000	30,000 / 45,000 / 75,000	UNLIMITED
Ambassador Black Diamond	30,000	300,000	60,000 / 90,000 / 150,000	UNLIMITED
CROWN DIAMOND RANKS				
Crown Diamond	30,000	500,000	100,000 / 150,000 / 250,000	UNLIMITED

CROWN DIAMOND requires three BLUE DIAMOND sponsor tree legs in downline.

The figures within this document are not guarantees or projections of your actual earnings, profits, or success. LivePURE makes no guarantee of financial success. Because of the countless variables that may affect a Brand Partner's ability to succeed in this field, it is impossible to accurately state what an Brand Partner may or may not expect to achieve. Consequently, LivePURE does not and will not make any guarantee of success of income, whether explicit or implied, and past Brand Partner testimonials as well as the information included in LivePURE's updated Income Disclosure Statement are only examples of what can be obtained as an Brand Partner with LivePURE. Past results do not represent any indication of future success or earnings. For additional information, please visit <http://livepure.biz/IDS>.

*Any earnings above the MAX EARNING POTENTIAL/WK is considered "CAPPED VOLUME" (with the exclusion of Sponsor Bonus and Retail Commissions).



⁴LTV: Lesser Team Volume – Total Commissionable Volume of the Lesser Leg (see Team Bonus) for the weekly commission period, including 100% of PV from Brand Partner purchases and 50% of PV from Customer purchases, on your Lesser Leg.

⁵STV: Sponsor Tree Volume – Total Commissionable Volume of your Sponsor Tree for the weekly commission period, including 100% of PV from Brand Partner purchases and 100% of PV from Customer purchases, in your Sponsor Tree. (The Sponsor Tree details the sponsoring activity of yourself and everyone you have sponsored throughout multiple Generations.)

Your Total Commissionable Volume excludes your personal purchases. The first order of your personally sponsored Customers will count toward your active PV requirement as well as Retail Commission and Sponsor Bonus, but do not count toward Total Commissionable Volume. Ongoing orders placed by your personally sponsored Customers will count toward your Total Commissionable Volume as well as your active PV requirement and CRB.

Team Bonus

Build a community. Paid Weekly

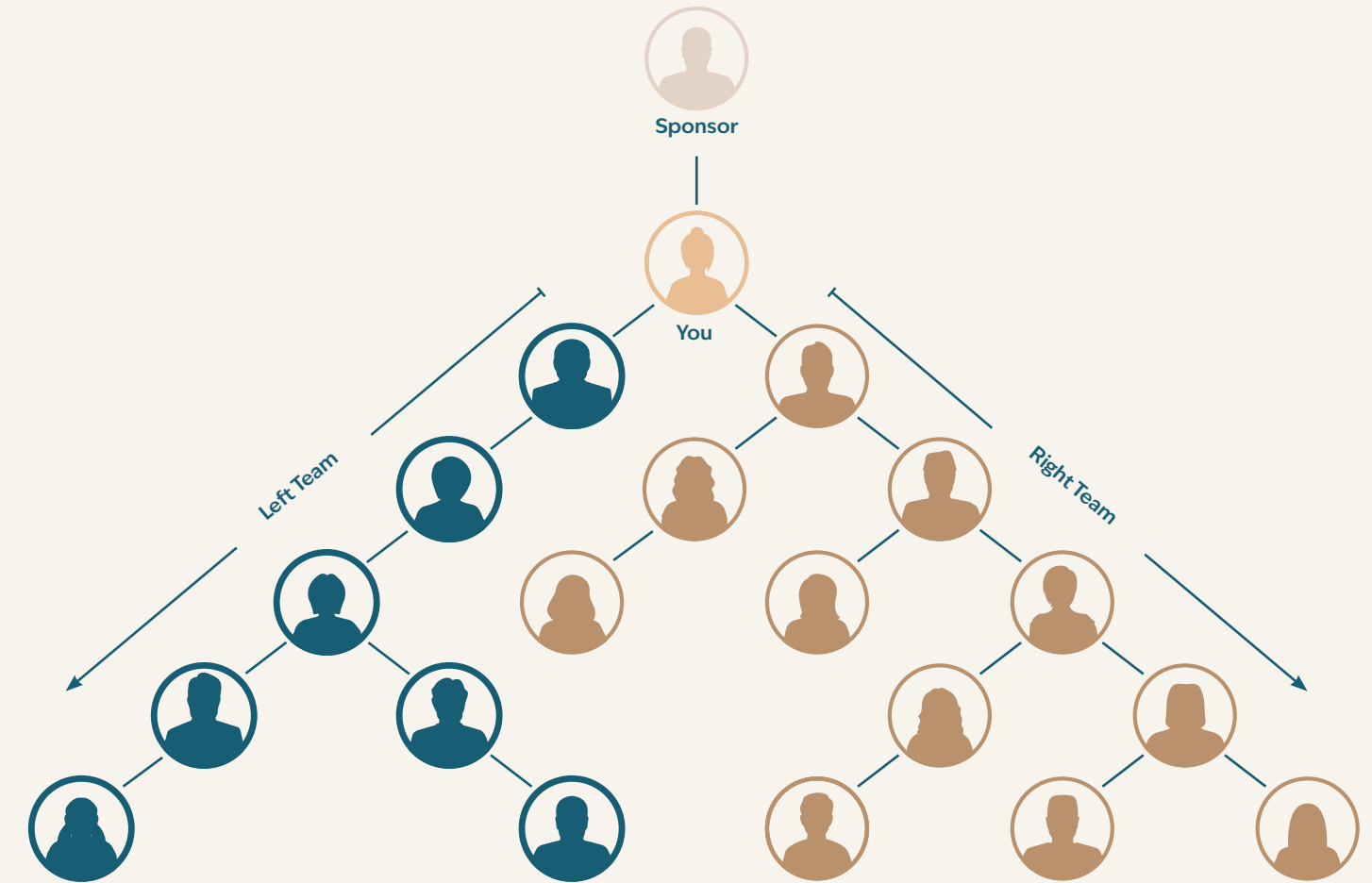
To be eligible for a Team Bonus each week you must meet the qualifications of an Active Bronze Director. Each week you have the opportunity to earn 10% of the total Personal Volume (PV)⁶ of Brand Partners in your lesser team. You are eligible to earn up to \$12,500 USD each week in Team Bonus.

To earn a Team Bonus you must build two teams, one on the left and one on the right with a minimum of one personally sponsored, Active Brand Partner on each team. Total PV for each team is tracked on a weekly basis and you as the team leader are paid on the team with the lesser total PV.

As you sponsor new Brand Partners you'll specify their placement on either your Right Team or Left Team, keeping in mind that you will only earn bonuses on your Lesser Team Volume (LTV) each week. Strategically placing your newly sponsored Brand Partners will help motivate all of your Brand Partners to greater action and success - and greater bonuses.

As long as you remain Active, the volume that is not included in your Team Bonus calculation in any given week will carry over. This allows you the potential to be paid on it at a later time. If you are not Active, all volume is removed.

Equal amounts of Paid Volume (including any applicable CAPPED VOLUME) is removed from both teams each week.

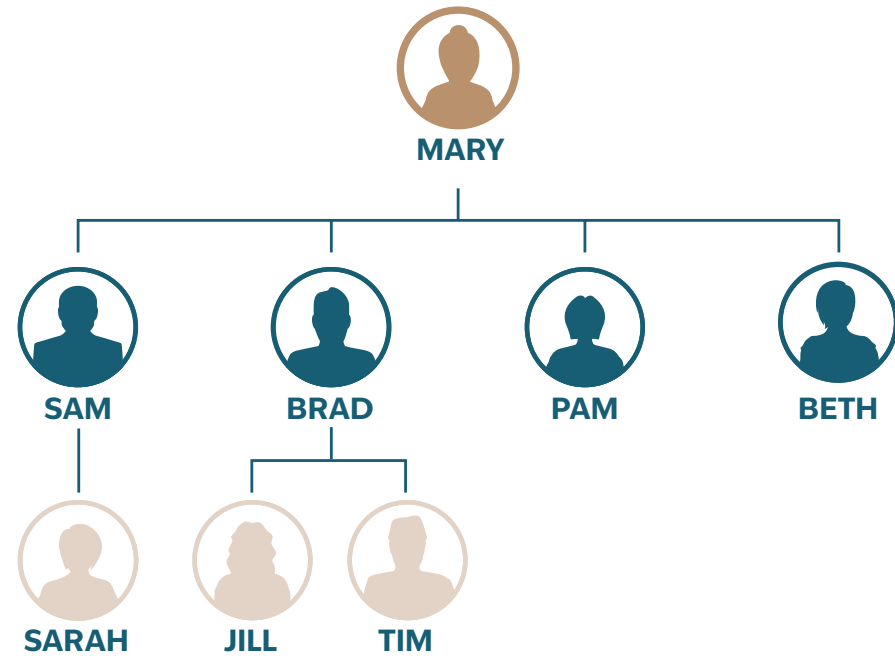


⁶Personal Volume (PV) consists of personal product purchases made by a Brand Partner and/or product sales to Preferred Customers and Retail Customers a Brand Partner has personally sponsored.

Generation Bonus

Lead & mentor your team. Paid Weekly

Example: Mary's Sponsor Tree



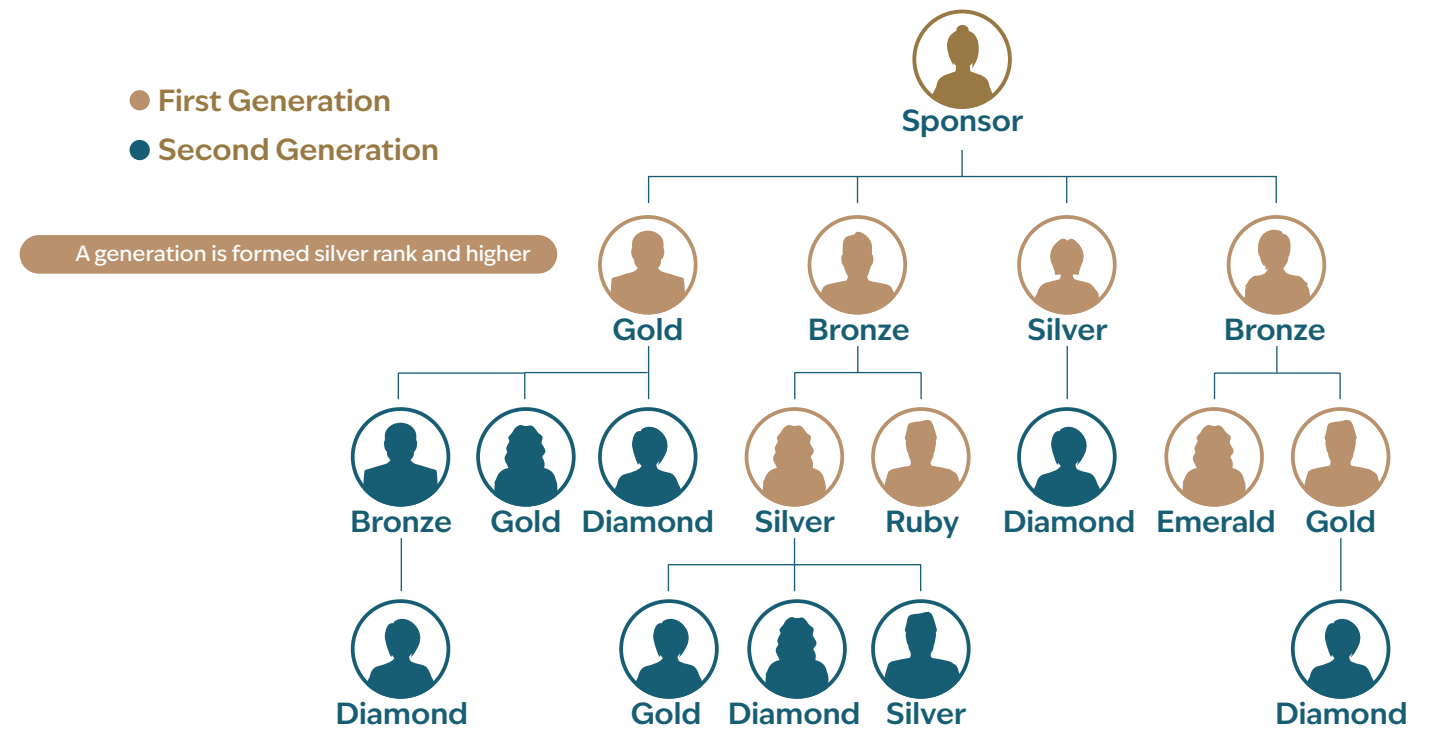
Mary sponsored Sam, Brad, Pam and Beth.
Sam sponsored Sarah. Brad sponsored Jill and Tim.
All of these individuals are in Mary's Sponsor Tree.

As an Active Gold Director or above, you qualify for a weekly Generation Bonus. This bonus is calculated as 7% of the total Team Bonuses paid to Brand Partners in your Sponsor Tree. Your Rank determines how many Generations deep you are paid.

The Sponsor Tree details the sponsoring activity of yourself and everyone you have sponsored throughout multiple Generations. A Sponsor Tree can have multiple legs. For example, If you have personally sponsored four Brand Partners, you will have four legs in your Sponsor Tree.

One Generation includes all of the Brand Partners in the Sponsor Tree from yourself down to and including the next Silver Director or above in each leg.

- First Generation
- Second Generation



The number of Generations on which each Rank is eligible to earn a Generation Bonus are as follows:

DIRECTOR RANKS	# OF GENERATIONS
Gold Director	1
Platinum Director	2
EXECUTIVE RANKS	
Sapphire Executive	3
Ruby Executive	4
Emerald Executive	4
DIAMOND RANKS	
Diamond	5
Blue Diamond	6
BOARDROOM RANKS	
Presidential Black Diamond	7
Chairman Black Diamond	8
Ambassador Black Diamond	9
CROWN DIAMOND RANKS	
Crown Diamond	10

Leadership Bonus

Share the wealth. Paid Weekly

Each week 3% of Total Company Volume (TCV) is placed in a global pool to be shared among the six highest LivePURE Leadership Ranks. An individual leader earns shares of the global pool in accordance with the Rank at which they are paid for each week.

LEADERSHIP RANK	SHARES OF POOL
Diamond	1
Blue Diamond	2
Presidential Black Diamond	3
Chairman Black Diamond	4
Ambassador Black Diamond	6
Crown Diamond	10

LivePURE Bonus

Make your goals real. Paid Monthly

Consistently maintaining your Leadership Rank has its own reward. This monthly bonus is earned when a Brand Partner achieves their Rank for two weeks or more in a month. You are not eligible to receive a LivePURE Bonus in any month that you receive a Leadership Bonus for two or more weeks.

RANK	BONUS
Gold	\$300
Platinum	\$500
Sapphire	\$750
Ruby	\$900
Emerald	\$1,100

*Only certain ranks eligible

Everything you need to begin is right here.

LivePURE has designed this plan to benefit you every step of the way on your journey to success.



LIVEPURE[™]

www.livepure.com

© 2026 PURE Gen Holdings - All Rights Reserved.